



NEWINGTON
LONDON

2 Bedrooms

Apartment

Located in London

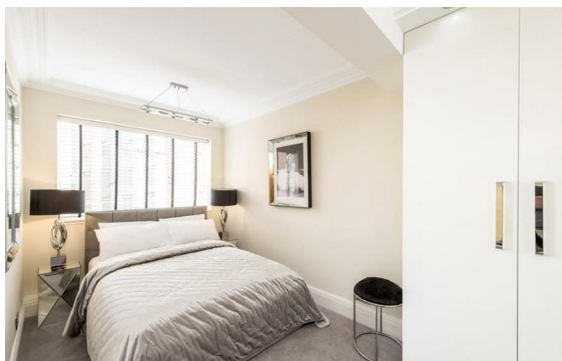
£1,175 Per Month



info@newingtonstates.com

<http://www.newingtonstates.com>

020 7724 2233



This stylish top-floor two-bedroom apartment is set within a highly sought-after Marylebone block with a resident porter. Finished to a high standard, it features a bright and spacious reception room, a modern fitted kitchen and two contemporary bathrooms.

Ideally located just moments from Baker Street and Marylebone Underground Stations, the property offers easy access to the area's excellent shops, cafés, and restaurants.

EPC rating: D

Energy Efficiency Rating: D

Agents Note: Whilst every care has been taken to prepare these particulars, they are for guidance purposes only. All measurements are approximate and are for general guidance purposes only and whilst every care has been taken to ensure their accuracy, they should not be relied upon and potential buyers/tenants are advised to recheck the measurements.

NEWINGTON LONDON

60 Upper Montagu Street

London

W1H 1SN

020 7724 2233

info@newingtonstates.com

<http://www.newingtonstates.com>